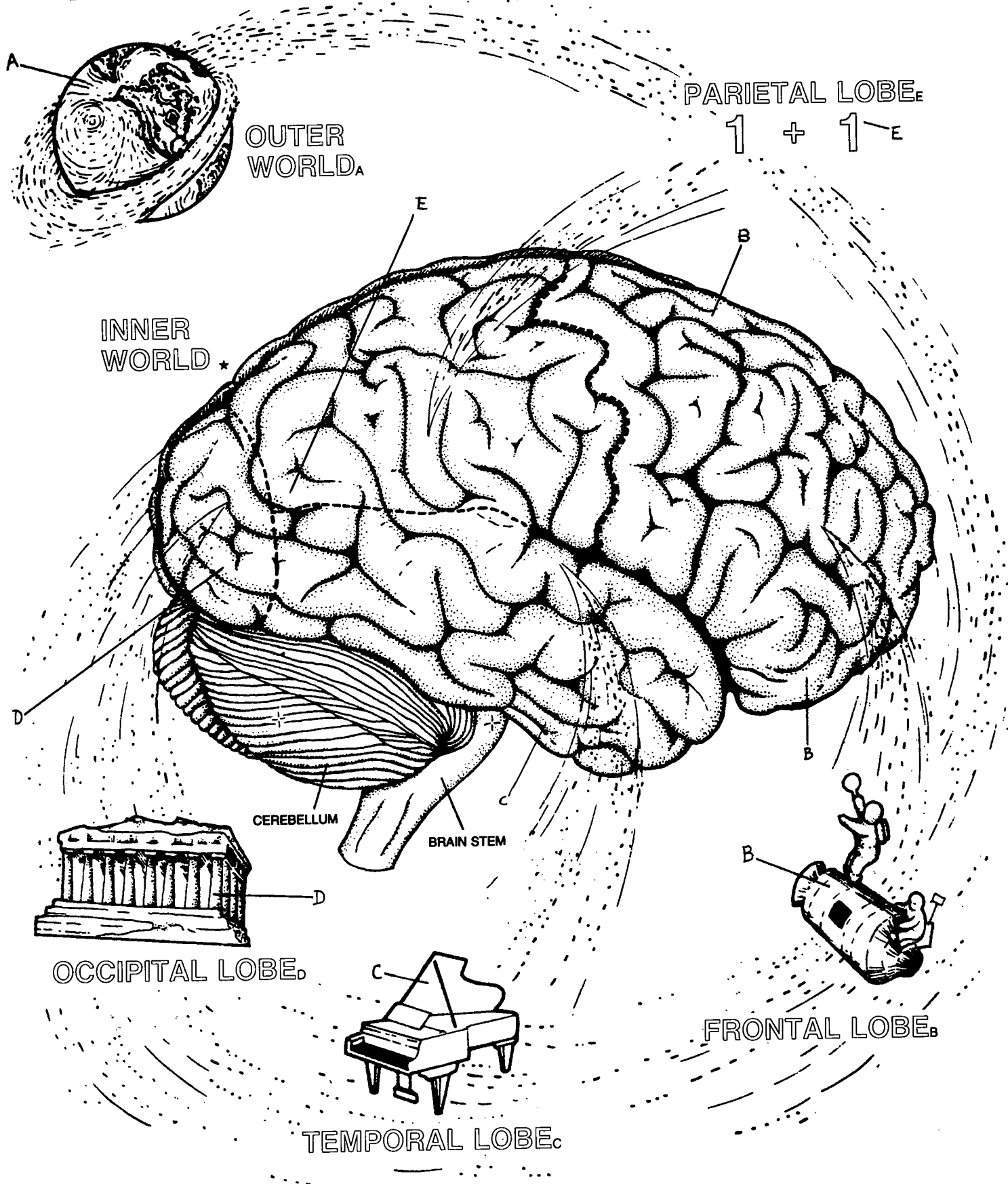


INTRODUCTION TO THE HUMAN BRAIN.



INTRODUCTION TO BRAIN STRUCTURE I.

FOREBRAIN★

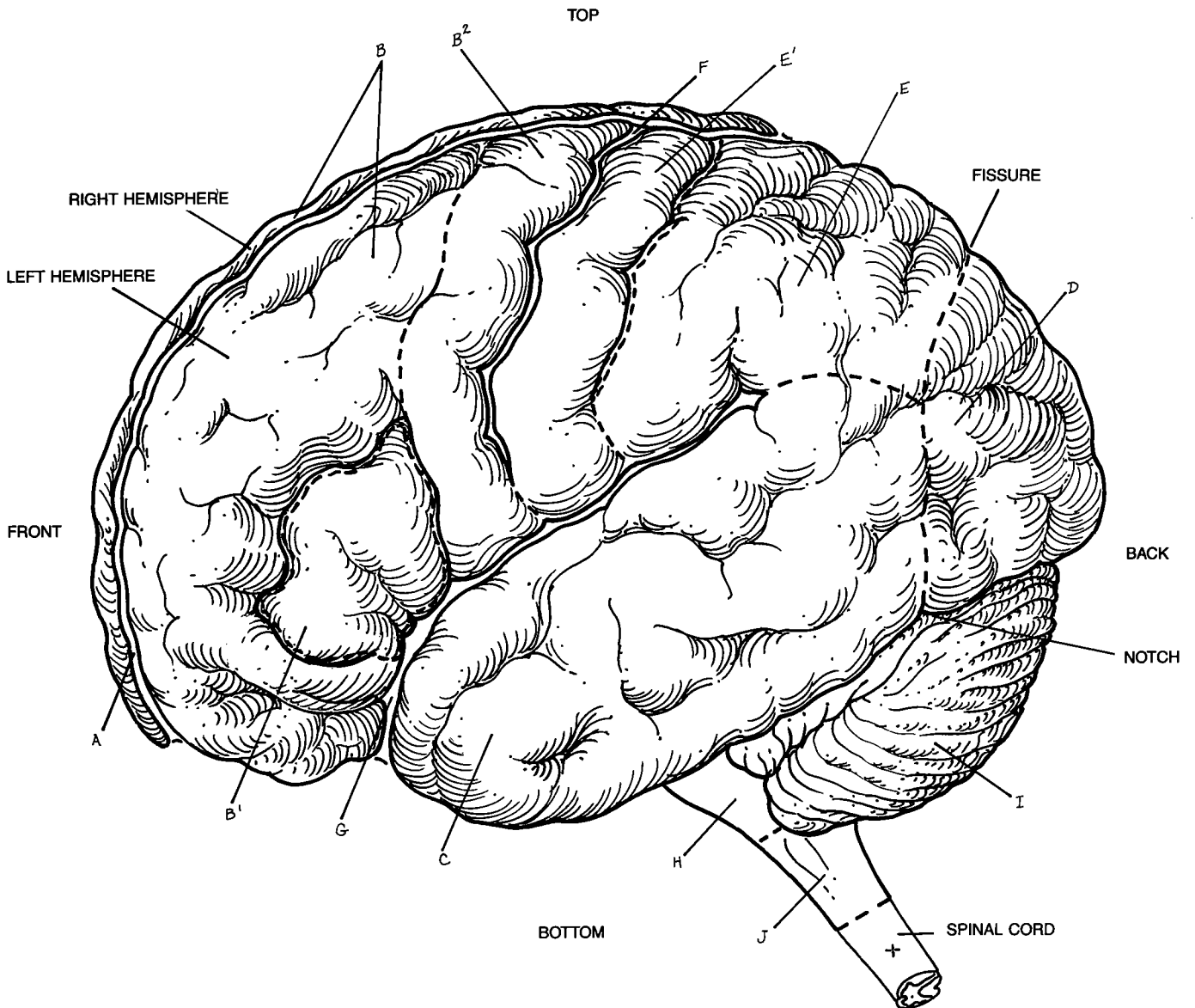
- LONGITUDINAL FISSURE_A
- CENTRAL SULCUS_F
- LATERAL FISSURE_G
- FRONTAL LOBE_B
- SPEECH AREA_{B¹}
- MOTOR AREA_{B²}
- TEMPORAL LOBE_C

PARIETAL LOBE_E

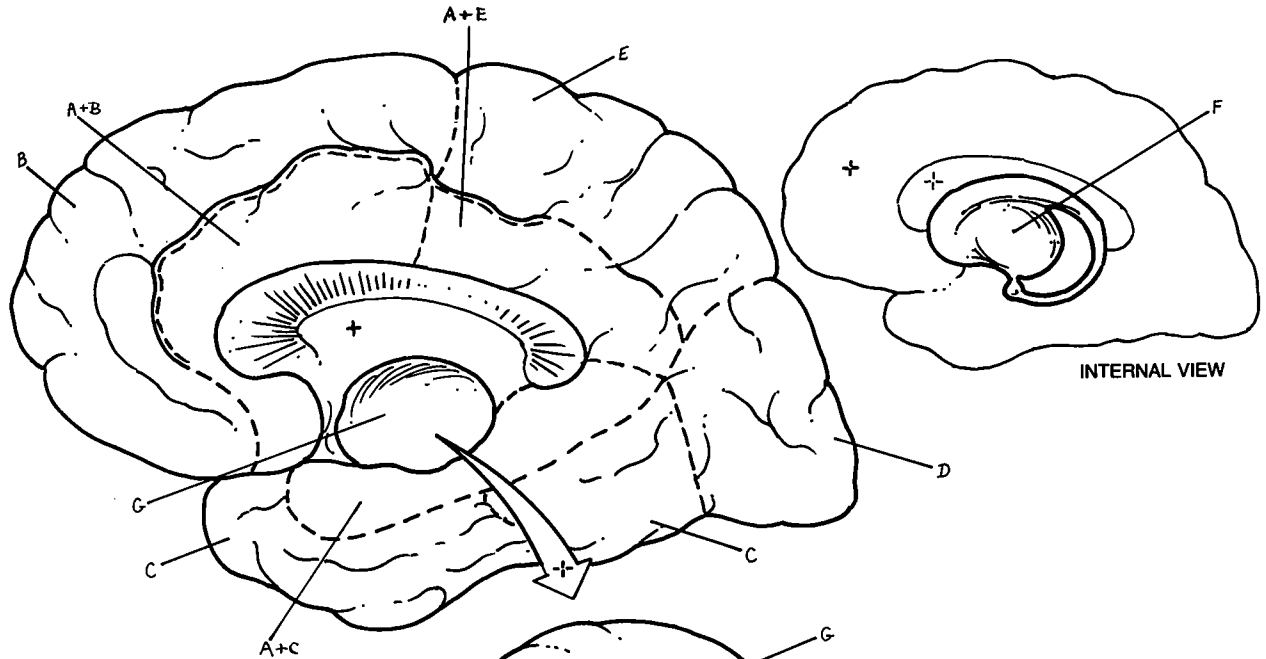
- PRIMARY SENSORY AREA_{E'}
- OCCIPITAL LOBE_D

HINDBRAIN★

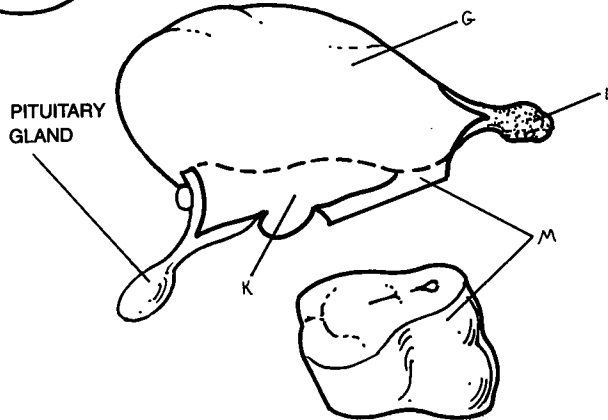
- PONS_H
- CEREBELLUM_I
- MEDULLA OBLONGATA_J



INTRODUCTION TO BRAIN STRUCTURE II.



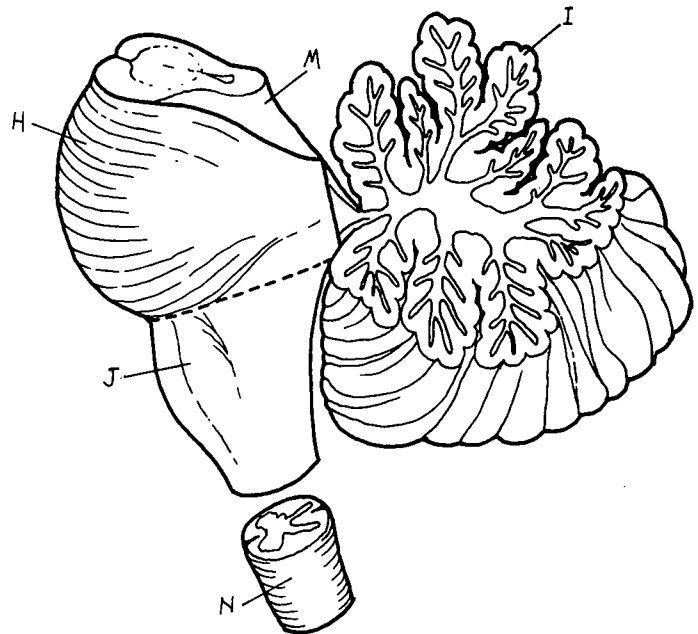
CEREBRAL HEMISPHERE*
 FRONTAL LOBE,
 TEMPORAL LOBE,
 PARIETAL LOBE,
 OCCIPITAL LOBE,
 LIMBIC LOBE,
 BASAL GANGLIA-



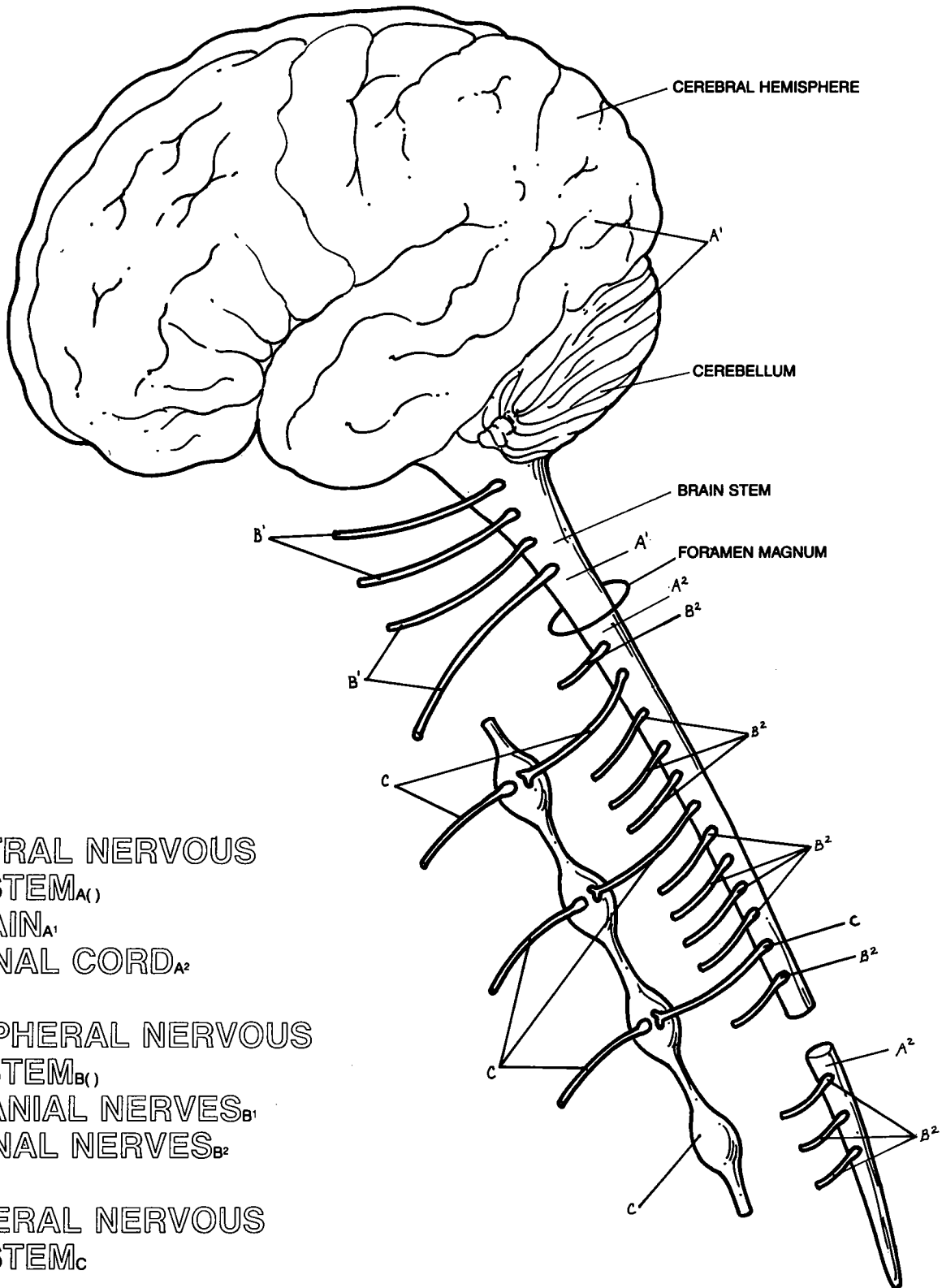
UPPER BRAIN STEM*
 THALAMUS,
 HYPOTHALAMUS,
 PINEAL GLAND.

MIDDLE BRAIN STEM*
 MIDBRAIN_M

LOWER BRAIN STEM*
 PONS_H,
 MEDULLA,
 CEREBELLUM,
 SPINAL CORD_N



ORGANIZATION OF THE NERVOUS SYSTEM.



CENTRAL NERVOUS SYSTEM_{A(1)}
 BRAIN_{A¹}
 SPINAL CORD_{A²}

PERIPHERAL NERVOUS SYSTEM_{B(1)}
 CRANIAL NERVES_{B¹}
 SPINAL NERVES_{B²}

VISCERAL NERVOUS SYSTEM_C